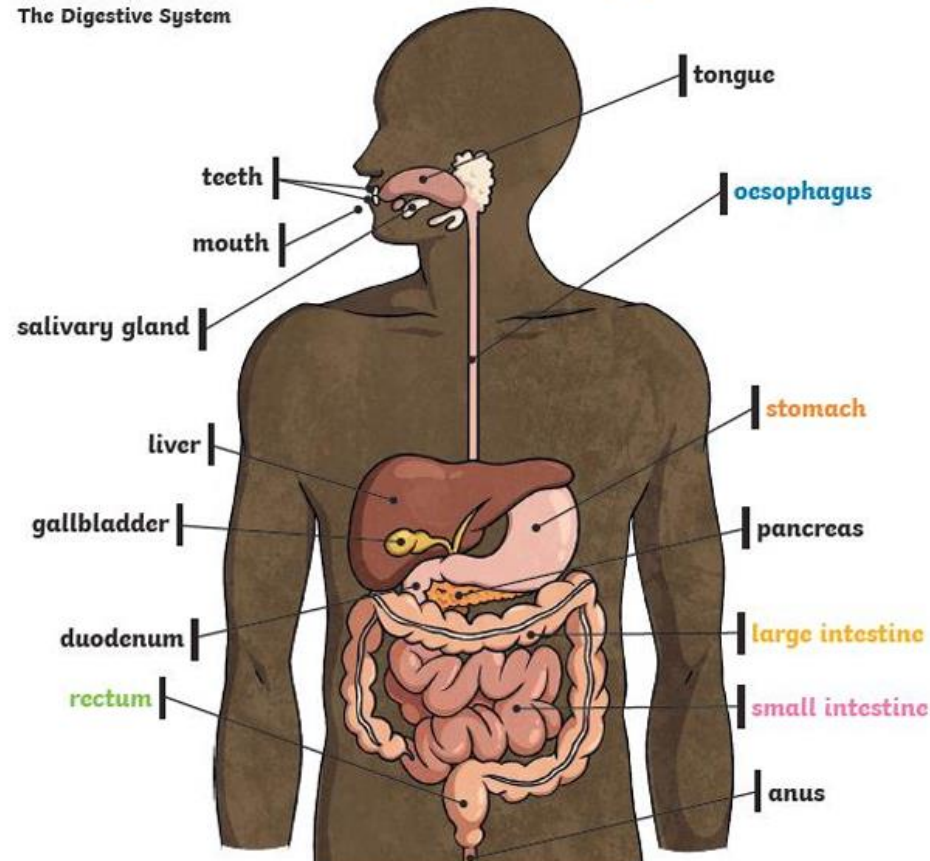


Key vocabulary	
digest	Break down food so it can be used by the body.
oesophagus	A tube made from muscles, which moves food from the mouth to the stomach.
stomach	An organ that breaks down food with stomach acid and churning.
small intestine	The part of the intestines where nutrients are absorbed into the body.
large intestine	Part of the intestines where water is absorbed into the body and stools are formed.
rectum	Part of the digestive system where stools are stored, before leaving the body through the anus.
herbivore	An animal that eats plants.
carnivore	An animal that feeds on other animals.
omnivore	An animal that eats plants and animals.

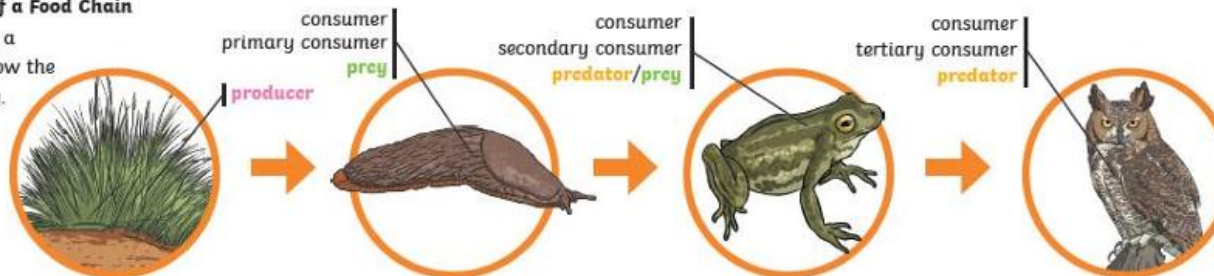
Animals including humans

The Digestive System

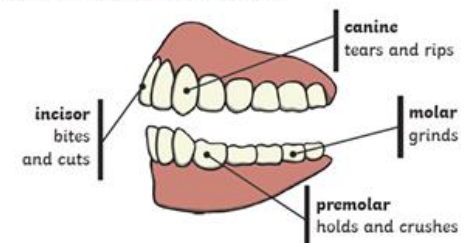


An Example of a Food Chain

The arrows in a food chain show the flow of energy.



Human Teeth and Their Functions



Some people have wisdom teeth but they have no function now.