

We are going to be reading lots of different traditional tales. We will also be looking at alternative versions and comparing them to the original.

Fiction = a made up story

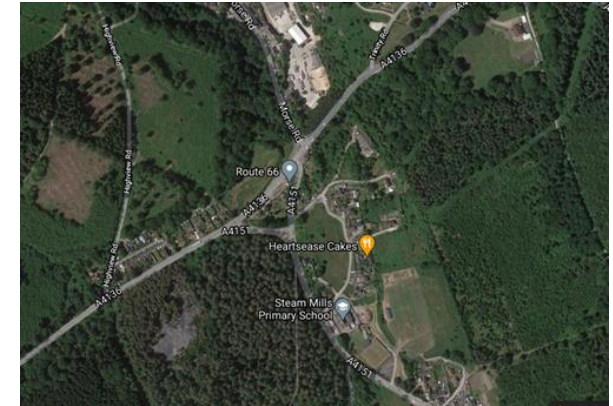


Non-fiction = facts

In Geography, we will be learning all about aerial maps. We will be using the maps to look at our local area.

We will be spotting key features, creating our own maps and making our own key.

We will be spotting human and physical features.



Challenge:

Can you find out if traditional tales are fiction or non-fiction books?

Challenge:

Can you see our school?

MATERIALS

Once upon a time...

In Science, we are going to be naming, comparing and grouping a variety of everyday materials.

We are going to be describing the physical properties of different materials.



We will also spend some time thinking about how plastic is affecting our planet.

Human features = features that humans have made or influenced.

(Houses, roads, parks etc)

Physical features = natural features of the earth.

(Trees, hills, rivers etc)

We will also be learning about daily and seasonal weather patterns in the UK.



Material = what the object is made of.
A window is made of glass.

See if you can find one thing, in your house, that is made from metal, glass, plastic, fabric and wood.

Challenge:

Similarities = things that are the same

Differences = things that are different



In History, we are going to be finding out all about houses from the past. We will also be thinking about the lives of the people who lived in the houses.

We will be looking at similarities and differences. We will be comparing our lives to those of people who lived in the past.

We will be asking and answering historical questions.

Places to Visit:



Newnham, Newent and St Fagan's are good places to visit, to look for different architecture.

We are going to be using the Internet to support our history work.

We will be using a child friendly search engine called Swiggle.

<https://swiggle.org.uk/>

Challenge:

Ask an adult to help you find the Swiggle website.

See if you can find out some information about Steam Mills or the railways.



Challenge:

Do you have any puppets at home? If you do, take a close look at them. Can you see what materials they are made from?



In DT we are going to be making our very own traditional tale character hand puppet.

We will be researching, designing, making and evaluating our puppets.

We will be practising our sewing skills.

We always like to make sure the children help to lead our topics, so we will be asking them about what else they would like to find out about...and then we may find that we deviate from our original plan!